



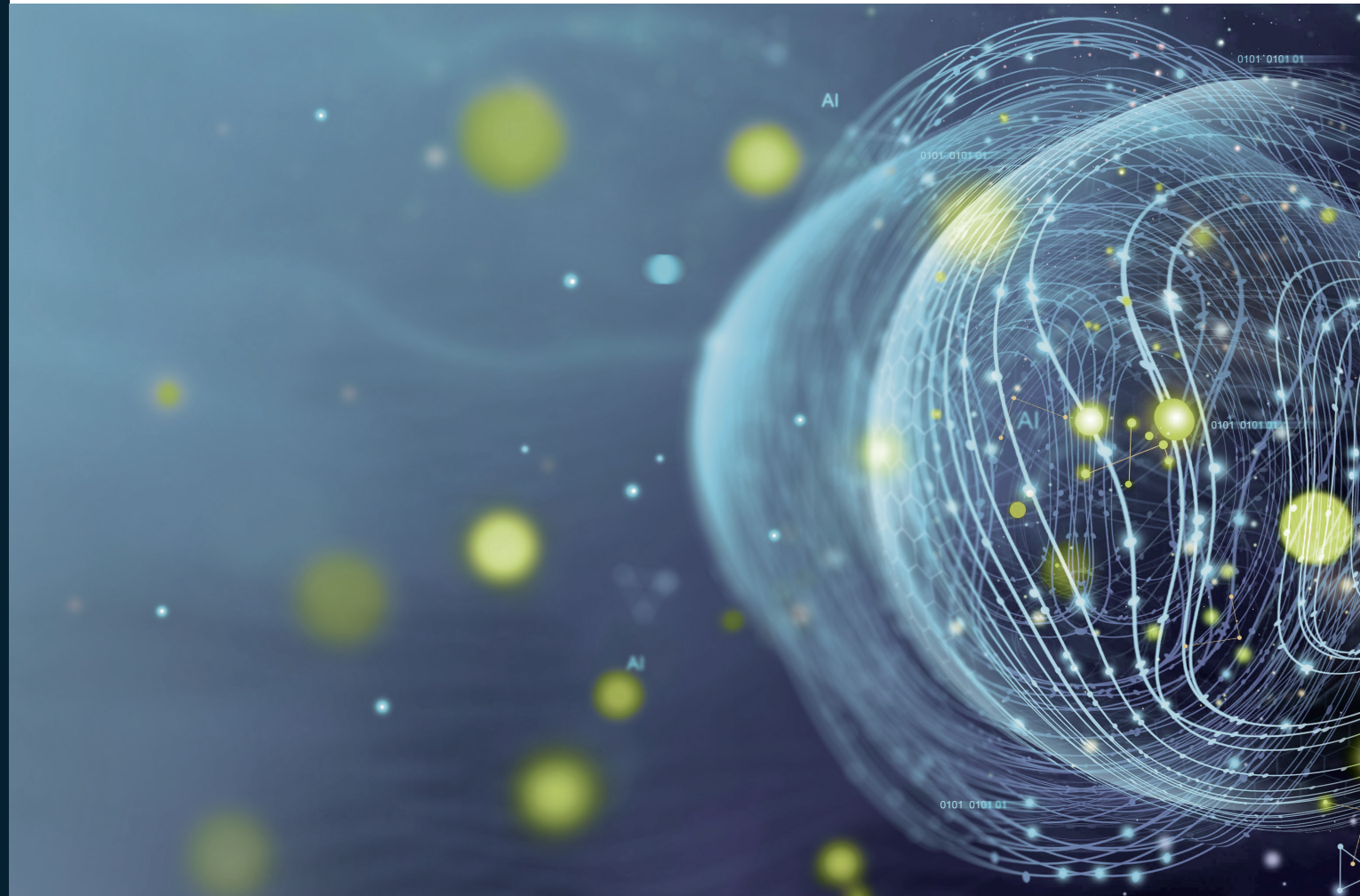
„We develop **innovative information systems** and offer **AI-based solutions** to provide up-to-date product information in a **standardised** and **automated** way – for a **holistic view** of company knowledge throughout the **entire product life cycle**.”



MAXIMILIAN GÄRBER
PARTNER & PRINCIPAL CONSULTANT

PANTOPIX

We are experts in the development of innovative information systems for the industry. For more than 25 years, we have been supporting our customers with intelligent solutions for delivering technical information. Our AI-based solutions directly address our customers' challenges.



PANTOPIX GmbH & Co. KG

Headquarter Lindau

Josephine-Hirner-Straße 2 | 88131 Lindau

Locations

Lindau | Munich | Berlin | Cluj (RO)

info@pantopix.com

www.pantopix.com | www.pantopixsphere.com



INFORMATION JOURNEY OF THE FUTURE

AI-BASED INFORMATION DELIVERY
FOR INTELLIGENT SOLUTIONS

PANTOPIX SPHERE. THE KNOWLEDGE PLATFORM.

PANTOPIX SPHERE is a unique platform for intelligent linking of company-wide technical information from heterogeneous source systems. It is based on semantic technologies and advanced AI methods and reliably provides information for various applications and end users.

The modular and scalable architecture maps the entire information journey from data collection to information delivery and helps companies to intelligently utilise their entire corporate knowledge.

Knowledge Graph as the core of the platform

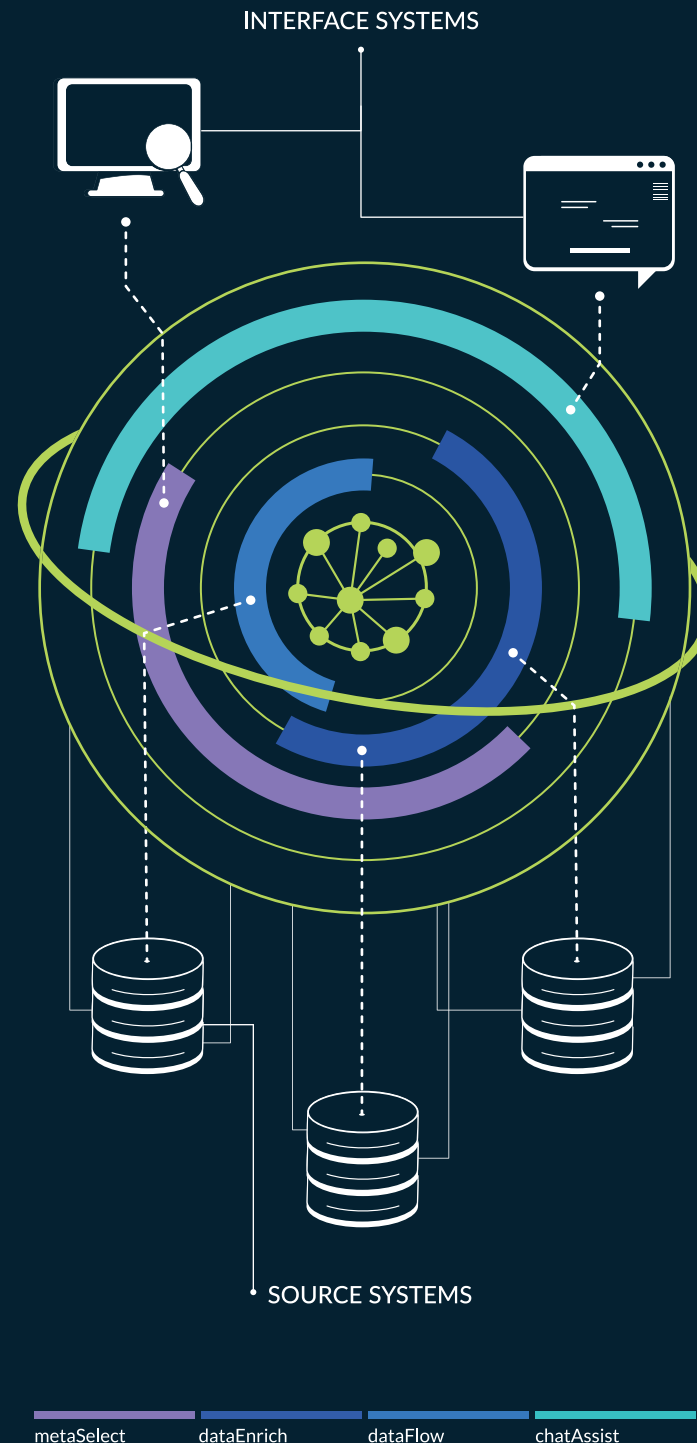
The core of PANTOPIX SPHERE is a knowledge graph that maps company-wide knowledge as a single source of truth. It typically consists of a knowledge model and a graph database. The special features are the connectors for integrating source systems such as CCMS, SPC or ERP as well as an upper ontology for product knowledge or versioning. Existing standards such as iIRDS are also supported.

In addition, a data catalogue contains information about connected systems and required entities. The integrated apps enable the distribution and transformation of data, the extraction and classification of information and interaction in natural language.

Application Scenarios

PANTOPIX SPHERE makes technical data and product information available where it is needed - along the entire information journey:

- PIM systems for development and production
- Specific portals for marketing
- Product/solution folders for sales
- Service applications for the field service
- Document portals



dataFlow and metaSelect: Transformation and Transport

PANTOPIX SPHERE is based on a distributed data architecture that contains production-ready process chains. These are configured for specific transport and transformation tasks. With dataFlow, structured and unstructured data can be automatically exchanged between systems, even in large quantities. The associated data repositories are cloud-capable and guarantee high availability and reliability as well as scalability and version control. metaSelect enables metadata to be exchanged and processed across systems.

dataEnrich: Extraction and Classification

Valuable corporate knowledge often resides in documents and other data sources. Using advanced NLP techniques such as text recognition, entity recognition and text classification, this knowledge is extracted and integrated into the knowledge graph, while the knowledge model is continuously curated and expanded.

chatAssist: Delivery of Content and Chat

Knowledge Graphs link validated information from different source systems and make it available via applications such as knowledge portals or service apps. Our LLM-based chat (GraphRAG) provides fact-based, company-specific answers in natural language that are up-to-date and precise.