



„With our **expertise**, we support you on **your way** into the **future**. Our consulting services range from the development of a **clear vision** to the selection of suitable systems.

Depending on your **individual requirements**, we design our services **flexibly** so that you get exactly what **you really need**.”



**DR. MARTIN LEY**

PARTNER & PRINCIPAL CONSULTANT

## PANTOPIX

We are experts in the development of innovative information systems for the industry. For more than 25 years, we have been supporting our costumers with intelligent solutions for delivering technical information. Our AI-based solutions directly address our costumers' challenges.



## PANTOPIX GmbH & Co. KG

### Headquarter Lindau

Josephine-Hirner-Straße 2 | 88131 Lindau

### Locations

Lindau | Munich | Berlin | Cluj (RO)

[info@pantopix.com](mailto:info@pantopix.com)

[www.pantopix.com](http://www.pantopix.com) | [www.pantopixsphere.com](http://www.pantopixsphere.com)



PANTOPIX CONSULTING

## WE CONNECT YOUR INFORMATION

EXCELLENT CONSULTING FROM VISION TO SYSTEM IMPLEMENTATION

## CONSULTING THAT TRANSFORMS YOUR TECHNICAL COMMUNICATION

Would you like to provide your technical information intelligently and efficiently?

At PANTOPIX, we not only offer the right technical solution – be it a content management system, a content delivery portal or a knowledge graph-based service assistant. The decisive added value lies in our comprehensive consulting. Because a technical solution is only as good as the strategy behind it.

With our many years of expertise and wide-ranging experience we are your reliable partner in all matters of technical communication.

START

### 1. VISION WORKSHOP

Where do you currently stand with your technical information and where do you aspire to be? In our vision workshop, we work together to develop your target image and a customised roadmap. Using proven methods such as speedboat and the PANTOPIX maturity model, we create clarity, commitment and the basis for concrete implementation steps.



### 2. AS-IS ANALYSIS

In our as-is analysis, we take a critical look at your current situation. We work with you to develop a detailed picture of your current processes, content and systems. We identify and evaluate any need for action, paving the way for an optimised information journey and sustainable success.



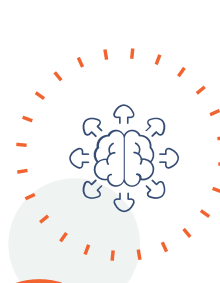
### 3. CONTENT STRATEGY

You are not content without content! In the end, it's the content that counts – even in the digital world, with or without artificial intelligence. We support you along the entire customer journey, develop information and metadata models and define publication concepts so that your target groups receive the information they need in the right format and medium.



### 4. KNOWLEDGE MODELS

Some people wonder what metadata is. Others lose the overview of terms such as taxonomies, thesauri and ontologies. Still others need a complex model for the representation of product knowledge. We are specialists in knowledge modelling, we are familiar with proven standards such as iirDS and support you on your way to semantically enriched technical information.



### 5. SYSTEM SELECTION

Are you planning to introduce a CCMS or CDP? Or are you looking for the right PIM system? As independent consultants we analyse your processes, define requirements and support you with the system selection – experienced and methodically proven.



GOAL

## AI IN TECHNICAL COMMUNICATION

**Nothing works (anymore) without AI!**

Find out with us, where artificial intelligence can make valuable contributions in your company – and where it cannot. Knowledge Graphs, LLMs, GraphRAG, autoclassification and information extraction are established methods for us.

We work with you to develop various use cases that can be made more efficient through the use of AI. Our experienced team of Knowledge Engineers will guide you into the digital future.